

2022
PRODUCT CATALOG

HALE

TRAILER

BRAKE & WHEEL

610-395-0371



LES FABRICATIONS

BRANDON
MANUFACTURING

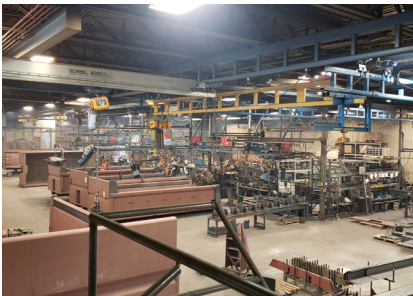


Brandon Manufacturing, formerly known as Brandon Truck Equipment, is a Canadian based company located an hour north of Montreal, Quebec. The company was founded over 50 years ago and began as a small, family-owned general welding facility. Today, Brandon employs over 100 people and manufactures a wide variety of dump bodies, municipal bodies, specialty bodies, replacement trailers, and bodies for nearly every environment and market need. From small, one-ton drop sided bodies to extreme duty disaster relief bodies and everything in between, we have what you need.

Our tag line, “The New Standard for the Modern Dump Body,” truly portrays who and what we are. We continue to innovate within our manufacturing process by using the latest technology to create the standard for excellence in our industry. We have recently invested in a XXL-format fiber laser cutting machine that is 100 feet long and 10 feet wide: the first of its kind in North America. We also invested in two press brakes: one which is 32 feet long and 1,200 tons that we use for pressing steel to form dump bodies, and a 14-foot, 250-ton unit that we use to form smaller dump bodies and parts. This innovative technology allows us precision and increased build quality that is unmatched by other body manufacturers. Additionally, we pride ourselves in being one of the most versatile dump body providers in the market today. Brandon gives you the choice of building your body in mild steel, stainless steel, weather- resistant steel, hardened Brinell 400/450 steel or Hardox 500 Tuf, allowing you to build a body that will best fit your needs.

We also give you the choice of hundreds of available accessories and ordering options. Whether you prefer one-piece smooth sides, formed sides, high-lift tailgates, front mount telescopic hoists, pin-to-pin hoists or underbody hoists and many other options, it's your choice to make.

Enough about us - let's see what we can do for you.



PRODUCT INDEX	PAGE
Contractor Models MD100 MD200 MD300 MD400SS	4-5
Vocation - Construction - Municipal Models FLEX-SYSTEM (Bolt-on)	6-7
Traditional Body (Welded)	7
Custom Body	8
Stainless Steel Body	8
Specialty Models Disaster Relief Body (Dumping/Non-Dumping) Chipper Body	9
Trailer Models Full Frame Replacement Trailer Hook Lift Bodies	10
Standard & Custom Available Options	11

HALE

TRAILER

BRAKE & WHEEL

610-395-0371

MD100 & MD200 Bailment pool style dump bodies built as turnkey units for quick & easy installation and quick lead times

MD100



MD200



FLOOR

- Available dimensions: 9' / 9.5' / 11' / 11.5' / 12'
- Material: 10 gauge Brinell 150
- Side to floor angle 22° with fixed side or flat floor with drop sides
- Outside width 99"
- Four "D"-rings installed (one in each corner)

HEADSHEET AND CAB SHIELD

- Material: 10 gauge Brinell 150
- 10" cab shield available at 53" or 61" height
- Headsheet configurations: flat for underbody hoist with 4" subframe
- Window slots in headsheet
- Optional manual tarp

TAILGATE

- Available dimensions: 19"
- Material: 10 gauge Brinell 150
- Double acting tailgate
- Spreader chains included

HOIST CONFIGURATION

- Patent Pending Brandon Underbody hoist with 4" bolt-on sub-frame for quick installation (brackets provided)
- Optional double acting electric power pack including oil tank and controls
- Optional electrical breaker and cables

FINISHING

- Sandblasted, primed, and painted with black heavy-duty epoxy

UNDERSTRUCTURE

- Crossmemberless structure
- Longmember configuration: formed 8"
- Longmember material: 3/16" Brinell 150
- Adjustable mud flap brackets mounted at rear

SIDE

- Available dimensions: 14"
- Material: 10 gauge Brinell 150
- Available configurations: fixed or drop sides
- Open profile top rail
- Drop side mounted to edge of body, closes without preparatory cleanup

FLOOR

- Available dimensions: 8'6" to 12'
- Material: 10 gauge Brinell 150, 3/16" Brinell 150, 3/16" Brinell 450
- Side to floor angle 22° with fixed side or flat floor with drop sides
- Outside width: 99"
- Four "D"-rings installed (one in each corner)

UNDERSTRUCTURE

- Crossmemberless structure
- Longmember configuration: formed 8"
- Longmember material: 3/16" Brinell 250
- Adjustable mud flap brackets mounted at rear

SIDE

- Available dimensions: 14" or 16"
- Material: 10 gauge Brinell 150, 3/16" Brinell 150, 3/16" Brinell 250
- Available configurations: fixed or drop sides
- Open profile top rail standard
- Drop side mounted to edge of body, closes without preparatory cleanup

HEADSHEET AND CAB SHIELD

- Material: 10 gauge Brinell 150, 3/16" Brinell 150, 3/16" Brinell 250
- 10" cab shield installed – variable heights from 49" to 61"

- Headsheet configurations: flat for underbody hoist
- Optional window slots in headsheet
- Optional ¾" light holes for cab shield
- Optional manual tarp

TAILGATE

- Available dimensions: 19" or 21"
- Material: 10 gauge Brinell 150, 3/16" Brinell 150, 3/16" Brinell 250
- Standard manual double acting tailgate
- Spreader chains included
- Optional bolt-on single centered coal door

HOIST CONFIGURATION

- Patent Pending Brandon Underbody hoist with 4" bolt-on sub-frame for quick installation (brackets provided)
- Optional double acting electric power pack including oil tank and controls
- Optional electrical breaker and cables (underbody hoist option only)

FINISHING OPTIONS

- Sandblasted and primed
- Sandblasted, primed, and painted with heavy-duty epoxy (various colors available)

MD300 & MD400SS Customized style dump bodies to meet specific client needs with many various options, materials and thicknesses

MD300



FLOOR

- Available dimensions: 8' 6" to 18'
- Material: 10 gauge Brinell 150 (up to 12'), 3/16" Brinell 150, 3/16" Brinell 450, 1/4" Brinell 450
- Side to floor angle 22° with fixed side or flat floor with drop sides
- Outside width: 99"
- Optional 96" (fixed sides)
- Four "D"-rings installed (one in each corner)

UNDERSTRUCTURE

- Crossmemberless structure
- Longmember configuration: formed or I-beam 6", 8" or 10"
- Longmember material: 3/16" Brinell 250
- Adjustable mud flap brackets mounted at rear

SIDE

- Available dimensions: 14" to 18" (drop sides), 14" to 20" (fixed sides)
- Material: 10 gauge Brinell 150, 3/16" Brinell 150, 3/16" Brinell 250
- Available configurations: fixed or drop sides
- Open profile top rail standard optional closed profile
- Drop side mounted to edge of body, closes without preparatory cleanup
- Optional wood board brackets
- Standard removal center post starting over 12' in length with double drop sides

HEADSHEET AND CAB SHIELD

- Material: 10 gauge Brinell 150, 3/16" Brinell 150, 3/16" Brinell 250

- 10" to 18" cab shield installed or loose – variable heights
- Headsheet configurations: flat for underbody hoist or recessed for front mount telescopic
- Optional window slots in headsheet
- Optional ¾" light holes for cab shield
- Optional manual tarp

TAILGATE

- Available dimensions: 19" to 25"
- Material: 10 gauge Brinell 150, 3/16" Brinell 150, 3/16" Brinell 250
- Standard manual double acting tailgate with optional air tailgate latch system
- Spreader chains included
- Optional bolt-on single centered coal door

HOIST CONFIGURATION

- Choice of Patent Pending Brandon underbody hoist with 4" bolt-on sub-frame for quick installation (Brackets provided) for 12' and under in length or front mount telescopic hoist (single or double acting) for 8' 6" to 18' in length
- Optional double acting electric power pack including oil tank and controls (underbody hoist option only)
- Optional electrical breaker and cables (underbody hoist option only)
- Optional front mount hoist installation kit

FINISHING OPTIONS

- Sandblasted and primed
- Sandblasted, primed, and painted with heavy-duty epoxy (various colors available)

MD400SS



FLOOR

- Available dimensions: 8' 6" to 16'
- Material: 10 gauge SS 304 or 201 (up to 12'), 3/16" SS 304 or 201, 3/16" Brinell 450, 1/4" Brinell 450
- Side to floor angle 22° with fixed side or flat floor with drop sides
- Outside width 99"
- Four zinc plated "D"-rings installed (one in each corner)

UNDERSTRUCTURE

- Crossmemberless structure
- Longmember configuration: formed or steel I-beam 6", 8" or 10" (formed longmembers mandatory with Brandon hoist)
- Longmember material: 3/16" Brinell 250 or 3/16" SS 304 or 201
- Adjustable mud flap brackets mounted at rear (steel or SS)

SIDE

- Available dimensions: 14" to 18" (drop sides), 14" to 20" (fixed sides)
- Material: 10 gauge SS 304 or 201, 3/16" SS 304 or 201
- Available configurations: fixed or drop sides
- Open profile top rail standard optional closed profile
- Drop side mounted to edge of body, closes without preparatory cleanup
- Optional SS wood board brackets
- Standard removal center post starting over 12' in length with double drop sides

HEADSHEET AND CAB SHIELD

- Material: 10 gauge SS 304 or 201, 3/16" SS 304 or 201

- 10" to 18" one piece cab shield installed or two pieces when not installed – variable heights available
- Headsheet configurations: flat for underbody hoist or recessed for front mount telescopic
- Optional window slots in headsheet
- Optional ¾" light holes for cab shield
- Optional manual tarp

TAILGATE

- Available dimensions: 19" to 25"
- Material: 10 gauge SS 304 or 201, 3/16" SS 304 or 201
- Standard manual double acting tailgate with optional air tailgate latch system
- Zinc plated spreader chains included
- Optional SS bolt-on single centered coal door

HOIST CONFIGURATION

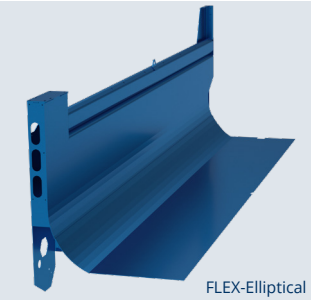
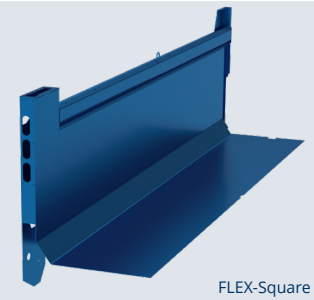
- Choice of Patent Pending Brandon underbody hoist with 4" bolt-on sub-frame for quick installation (Brackets provided) for 12' and under in length or front mount telescopic hoist (single or double acting) for 8' 6" to 16' in length
- Optional double acting electric power pack including oil tank and controls (underbody hoist option only)
- Optional electrical truck battery breaker and cables (underbody hoist option only)
- Optional front mount hoist installation kit

FINISHING

- Acid wash (up to 14') or glass bead blasting
- Underneath painted black



FLEX-BODY Stronger and lighter than a typical body, giving you an added advantage in the field.



FLEX-GATE The first universal dump tailgate. Three interchangeable gate configurations that can be switched at any time, without grinding, welding or painting.



Single Action
Tailgate opens as bed is raised for dumping



Internal High Lift
Pneumatic operation to lift the tailgate out of the way for dumping



Swing / Barn Door
Manually swing tailgate out of the way and attach to side of body for dumping

FLEX-PARTS Many bolt-on options that can be added or switched out at any time - even after the body is painted.



Cab Shield



Cradle



Coal Door(s)



Rear Hinge

FLEX-Body (Bolt-on technology)
14' to 22' in 6" increments
Offered in:
•FLEX-Square
•FLEX-Elliptical
Your choice of material thickness in Hardox 500 Tuf Steel



INSIDE WIDTH	88"	OUTSIDE WIDTH	100"
--------------	-----	---------------	------

FLEX-BODY™	AVAILABLE DIMENSIONS	MATERIAL
FLOOR	14' to 22' (6" increments)	3/16" or 1/4" Brinell 500 (Hardox 500 Tuf)
SIDES	48" to 66" (6" increments)	5/32", 3/16" or 1/4" Brinell 500 (Hardox 500 Tuf)
TAILGATE	48" to 66"	1/4" Brinell 500 (Hardox 500 Tuf)
FRONT	Customized to truck	5/32", 3/16" or 1/4" Brinell 500 (Hardox 500 Tuf)
LONGMEMBERS	8" or 10" Formed long sills	3/16" or 1/4" Brinell 250
CAB SHIELD	18" to 36" (Bolt-on)	10 gauge 150 Brinell

* Standard bolt-on top rail with optional open profile top rail

Traditional Body (Welded)
10' to 22' in 6" increments
Offered in:
•Traditional Square
•Traditional Elliptical
Your choice of material thickness in Brinell 450 Steel



INSIDE WIDTH	85" or 88"	OUTSIDE WIDTH	96" or 100"
--------------	------------	---------------	-------------

TRADITIONAL WELDED BODY	AVAILABLE DIMENSIONS	MATERIAL
FLOOR	10' to 22' (6" increments)	3/16" or 1/4" Brinell 450 or Hardox 500 Tuf
SIDES	24" to 66" (6" increments)	5/32", 3/16" or 1/4" Brinell 450 or Hardox 500 Tuf
TAILGATE	32" to 66"	3/16" or 1/4" Brinell 450 or Hardox 500 Tuf
FRONT	Customized to truck	5/32", 3/16" or 1/4" Brinell 450 or Hardox 500 Tuf
LONGMEMBERS	6", 8" or 10" formed	3/16" or 1/4" Brinell 250
CAB SHIELD	18" to 36" (Welded or bolt-on)	10 gauge or 3/16" 150 Brinell

* Standard bolt-on top rail with optional open profile top rail

Custom Body

10' to 22' in 1" increments
Offered in:
•Custom Square
•Custom Elliptical
Your choice of material thickness & steel grades
plus options not available on other models



INSIDE WIDTH	85" or 88"	OUTSIDE WIDTH	96" or 100"
--------------	------------	---------------	-------------

CUSTOM BODY	AVAILABLE DIMENSIONS	MATERIAL
FLOOR	8' to 22' (1" increments)	Mild Steel: 3/16" Brinell 150 Hardened Steel: 3/16" or 1/4" Brinell 250 • 3/16" or 1/4" Brinell 450 Hardox 500 Tuf: 5/32", 3/16" or 1/4"
SIDES	24" to 66" (1" increments)	Mild Steel: 10 gauge or 3/16" Brinell 150 Hardened Steel: 3/16" or 1/4" Brinell 250 • 3/16" or 1/4" Brinell 450 Hardox 500 Tuf: 5/32", 3/16" or 1/4"
TAILGATE	24" to 66" (1" increments)	Mild Steel: 3/16" Brinell 150 Hardened Steel: 3/16" or 1/4" Brinell 250 • 3/16" or 1/4" Brinell 450 Hardox 500 Tuf: 5/32", 3/16" or 1/4"
FRONT	Customized to truck	Mild Steel: 10 gauge or 3/16" Brinell 150 Hardened Steel: 3/16" or 1/4" Brinell 250 • 3/16" or 1/4" Brinell 450 Hardox 500 Tuf: 5/32", 3/16" or 1/4"
LONGSILLS	6", 8" or 10", formed or I-Beams	3/16" or 1/4" Brinell 250
CAB SHIELD	12", 18", 24", 30", 36", 42" or 48"	10 gauge or 3/16" Brinell 150

Stainless Body

10' to 20' in 6" increments
Offered in:
•Square Stainless
•Elliptical Stainless
Your choice of material thickness and grade in either
304 or 201 Stainless with optional steel floor & longills



INSIDE WIDTH	85" or 88"	OUTSIDE WIDTH	96" or 100"
--------------	------------	---------------	-------------

STAINLESS BODY	AVAILABLE DIMENSIONS	MATERIAL
FLOOR	10' to 20'	Stainless: 3/16" or 1/4" SS201/304 Hardened Steel: 3/16" Brinell 250 (seamed) • 3/16" or 1/4" Brinell 450
SIDES	24" to 60"	Stainless: 10 gauge, 3/16" or 1/4" SS201/304
TAILGATE	24" to 60"	Stainless: 10 gauge, 3/16" or 1/4" SS201/304
FRONT	Customized to truck	Stainless: 10 gauge, 3/16" or 1/4" SS201/304
LONGSILLS	6", 8" or 10", formed or I-Beam	Stainless: 3/16" or 1/4" SS201/304 Hardened Steel: 3/16" or 1/4" Brinell 250
CAB SHIELD	12", 18", 24", 30" or 36"	Stainless: 7 or 10 gauge SS201/304

Disaster Relief Body

For extreme applications, including demolition, waste management (white days), scrap steel hauling, rendering and disaster relief clean up. Built for front or rear grapple systems available as a front mount dumping or as a non-dumping body.



Offered in:
•Your choice of material thickness in Brinell 450
•Dumping or Non-Dumping
•Flat front •Flat rear (no door)

INSIDE WIDTH	92 1/2"	OUTSIDE WIDTH	102"
--------------	---------	---------------	------

DISASTER BODY	AVAILABLE DIMENSIONS	MATERIAL
FLOOR	16' to 26' (6" increments)	1/4" or 3/16" Brinell 450
SIDES	60" to 96" (6" increments)	1/4" or 3/16" Brinell 450
TAILGATE	60" to 96" (6" increments)	1/4" or 3/16" Brinell 450
FRONT	48", 60", or 96"	1/4" or 3/16" Brinell 450
LONGMEMBERS	8" or 10"	1/4" or 3/16" Brinell 250
CAB SHIELD	24" to 48"	7g or 10g - 150 Brinell

*BDM-Mild Steel model available upon request.

Chipper Body

Built with Hardox HiAce, the new ace in corrosion-resistant wear steel for acidic environments. Using this hardened steel gives you the advantage of product longevity and protects your body even if paint is scratched.



Offered in:
•"L" Shape with saddle-style front toolbox
• Square

OUTSIDE WIDTH	96"
---------------	-----

CHIPPER BODY	AVAILABLE DIMENSIONS	MATERIAL
BODY	11' x 66" x 30" (other configurations available upon request)	4mm (5/32") Hardox 450 HiAce
LONGMEMBERS	8" formed	3/16" Brinell 250
BRANDON UNDERBODY HOIST	UH51 or UH60	-

TRAILER MODELS

Full Frame Replacement Trailer
In your choice of steel and thickness



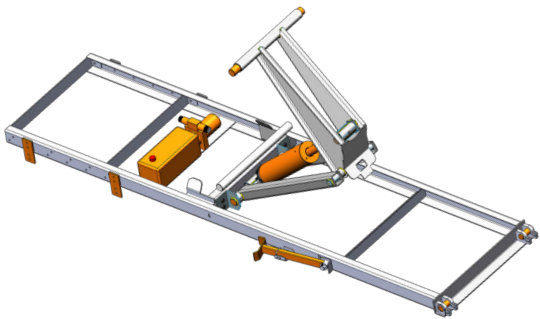
INSIDE WIDTH	87 1/2" or 89 1/2"	OUTSIDE WIDTH	96" or 99"
--------------	--------------------	---------------	------------

TRAILER	AVAILABLE DIMENSIONS	MATERIAL
FLOOR	16' to 32'	3/16" or 1/4" Brinell 450 • Hardox 500 Tuf
SIDES	54" to 72"	5/32", 3/16" or 1/4" Brinell 450 • Hardox 500 Tuf
TAILGATE	54 to 66"	1/4" or 3/16" Brinell 450 • Hardox 500 Tuf
DOG HOUSE FRONT	-	5/32", 3/16" or 1/4" Brinell 450
LONGSILLS	-	3/16" or 1/4" Brinell 450
HOIST ATTACHMENT	Pin-to-pin hoist	-

Hooklift Bodies
All of our bodies are available as a Hooklift body.



Brandon Underbody Hoist
Patent Pending Hoist Quick Attach System



Part Number	Description	Sub-frame	Safety Prop	5" Cylinder	Pump & Motor	Oil Tank	Wires & Connectors	Breaker	Weight (lbs)
UH51SF	Sub-frame and hoist only	✓	✓	✓					575
UH51SF-PP	Same as above, plus electric over hydraulic power pack	✓	✓	✓	✓	✓			605
UH51SF-PPE	Same as above, plus electrical kit for truck battery	✓	✓	✓	✓	✓	✓	✓	609

STANDARD & CUSTOM AVAILABLE OPTIONS

- FLEX-PARTS**
- Bolt-on cab shield
 - Bolt-on rear hinge (20-50 ton)
 - Bolt-on front cradle (20 & 30-50 ton)
 - Bolt-on reversible hoist blocks (20-30 ton & 40-50 ton)
 - Bolt-on coal doors
 - Bolt-on spreader kits
 - Bolt-on safety door locks

- FRONT**
- Standard straight front mount recess (12" deep)
 - Flat front for underbody hoist
 - Flat front for outside front mount hoist (brackets installed)
 - Sloped front for front mount hoist
 - Dog House for Pin to Pin hoist
 - Integrated front hydraulic tank
 - Shovel bracket
 - Hyva front mount cylinders
 - Cradle & hoist blocks (5-50 ton)
 - Front mount hoist installation kits (tank, cradle, blocks & rear hinge) (5-50 ton)

- CAB SHIELDS**
- 12" to 48"
 - 10" extension
 - Assembled or loose
 - Narrow or full width
 - Custom
 - Light hole cut-outs (oval or round)
 - LED & strobe lighting kits with marine & fire grade wiring harness
 - Light hole cover

- HOISTS**
- Front mount telescopic
 - Pin-to-pin
 - Underbody

- TARP SYSTEMS**
- Electric tarps
 - Air tarps
 - Manual tarps
 - Mesh or asphalt canvas
- SIDES**
- 1 piece sides (formed top rail & rub rail - no welds)
 - Smooth sides
 - Formed aerodynamic sides
 - Tapered/sloped sides
 - Vertical posts on select models
 - Weld-on horizontal bracing on select models
 - Box bracing on select models
 - Inverted angle irons on select models
 - Open profile top rail
 - Non-removable bolt-on top rail
 - Dirt shedding top rails
 - Snow extension side board kit
 - Steel side boards
 - Single or double quick release drop sides for Contractor models
 - Side light brackets

- TAILGATE**
- Standard sloped or straight gate
 - Barn door / Swing tailgate
 - Double acting tailgate
 - High-lift tailgate
 - Air internal rear post mounted system
 - Asphalt tailgate/bumper (reverse taper)
 - Light hole cut-outs (oval or round)
 - LED & strobe lighting kits with marine & fire grade wiring harness
 - Standard one-panel tailgate 2, 3 or 6 panels on select models (vertical or horizontal style available)
 - Coal/material chutes (1, 2 or 3) standard or guillotine style
 - Air or manual tailgate kit or combination of both systems
 - Manual quick release tailgate system for Contractor models

- REAR**
- Flat bumper
 - Asphalt aprons (8", 10", 12" or custom)
 - Lighting bars
 - Rear hinges (5-50 ton)
 - 7 gauge 201/304 Stainless steel rear posts
 - Sloped rear post with recessed hardware
 - Scow ends
- UNDER THE BODY**
- 8", 10" or 12" formed longills 6", 8" & 10" I-Beams or "C" channel (with or without support flange)
 - Underbody hoist & sub-frame
 - Brandon mud flaps (front & rear)
 - Traditional heat kits (4" or 5" stainless steel)
 - Thermal heat kits (4" or 5" stainless steel)
 - Body prop mounted on cradle

- PRE-INSTALL OPTIONS**
- Paint on select models
 - Pre-installed cab shield (front entrance clearance height needed)
 - Pre-installed wiring & lighting kits (body & cab shield)
 - Pre-installed cab shield lighting bars
 - Pre-installed body prop & mud flap bracket kits
 - Pre-installed tarp system (excluding canvas)



LES FABRICATIONS

BRANDON

MANUFACTURING



HALE
TRAILER
BRAKE & WHEEL

610-395-0371

David Zile
484-294-4443
dzile@haletrailer.com

Tyler Soltes
484-294-4479
tsoltes@haletrailer.com

Tom Hunsicker
484-294-4428
thunsicker@haletrailer.com

haletrailer.com/body